



HH35L

Multi-Spectrum Binocular

HIKMICRO HABROK HH35L multi-spectrum binocular is equipped with a 384×288 @12 μm thermal detector and a 2560×1440 optical detector. With less than 20 mK NETD, which represents high thermal sensitivity, it ensures perfect image quality and detail recognition even in the hardest weather conditions. Its 1000 m Laser rangefinder can accurately measure the distance when you are stalking or observing under low-light conditions. It can be applied mainly in forest & field hunting, birding, animal searching, rescuing and marine scenario.

Key Feature

- 384×288 resolution @12 μm thermal detector
- High sensitivity thermal module NETD < 20 mK (@25°C, F# = 1.0)
- 35 mm, F1.0 lens with thermal detection range up to 1800 m
- 2560×1440 high resolution CMOS detector
- 1920×1080 resolution 0.49-inch OLED display
- Built-in 850 nm IR illuminator and Laser Rangefinder of 1000 m measuring distance
- 6 h+ continuous operation
- 780 g lightweight, compact and ergonomic design

Specification

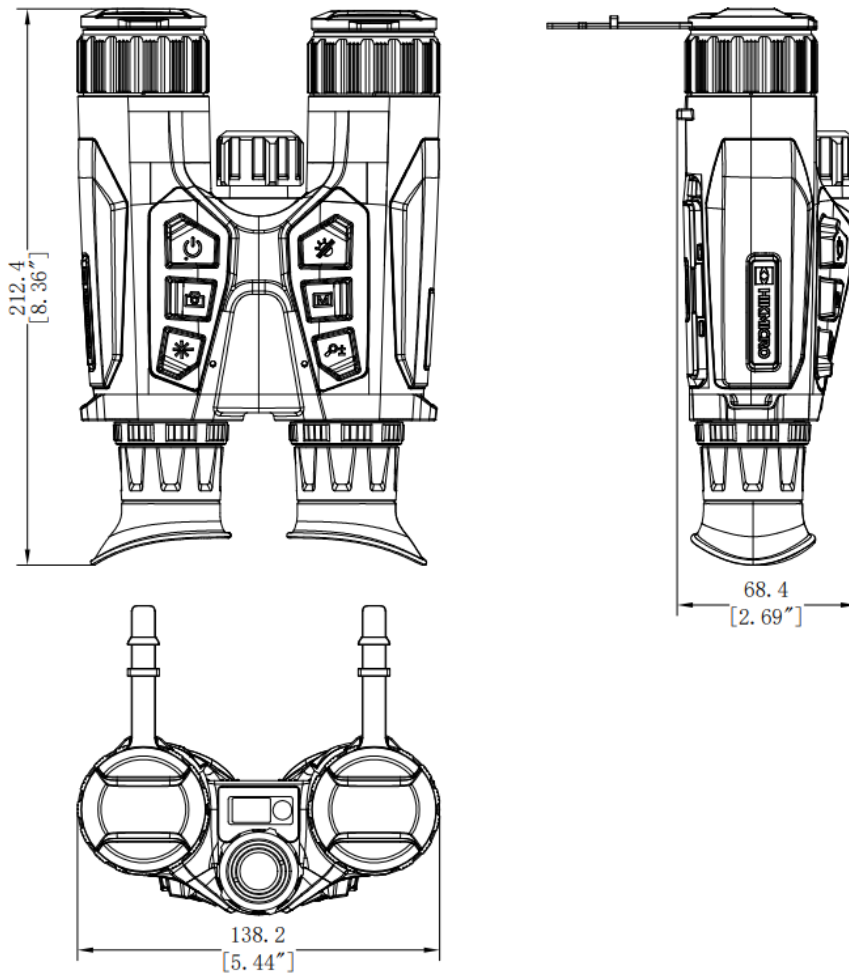
| Thermal Module | |
|--------------------------------------------|---------------------------------------------------------------------------|
| Image Sensor | VOx Uncooled Focal Plane Arrays |
| Max. Resolution | 384 × 288 |
| Frame Rate | 50 Hz |
| Pixel Interval | 12 μm |
| Response Waveband | 8 μm to 14 μm |
| NETD | Less than 20 mK (@25°C), F# = 1.0 |
| Lens (Focal Length) | 35 mm, F1.0 |
| Focus Mode | Focus Ring |
| Detection Range | 1800 m |
| Min. Focusing Distance | 3.5 m |
| Magnification | 4.0x to 32x (8x) |
| Field of View(H × V), Degrees/m @100 m | 7.5° × 5.7°/13.2 m × 9.9 m |
| Optical Module | |
| Image Sensor | 1.88" Progressive Scan CMOS |
| Max. Resolution | 2560 × 1440 |
| Focal Length | 31 mm, F1.2 |
| Min. Working Distance | 3 m |
| Min. Illumination | 0.001 lux @ (F1.0 , AGC On) |
| Focus Mode | Focus Ring |
| Magnification | 2.9x to 23.2x (8x) |
| Field of View (H × V), Degrees/m @100 m | 13.9° × 7.8°/24.4 m × 13.6 m |
| Smart IR | Yes |
| Viewing Range at Night | 400 m |
| Image Display | |
| Display | 0.49 inch, OLED, 1920 × 1080 |
| Palettes | Thermal: Black Hot, White Hot, Red Hot, Fusion; Optical: Day, Night, Auto |
| FFC (Flat Field Correction) Mode | Auto, Manual, External Correction |
| Exit Pupil | 8 mm |
| Eye Relief | 15 mm |
| Diopter (Range) | -5 D to +3 D |
| Brightness Adjustment | Yes |
| Tone Adjustment | Cold, warm |
| Contrast Adjustment | Yes |
| Zoom Pro | Yes |

| System | |
|---------------------------------|----------------------------------------------------|
| Record Video | Yes |
| Capture Snapshot | Yes |
| Audio Recording | Yes |
| Standby Mode | Yes |
| Storage | Built-in EMMC (64 GB) |
| PIP | Yes |
| Hotspot | Yes |
| Hot Track | Yes |
| Digital Magnetic Compass | Yes |
| GPS | Yes |
| Local Album | Yes |
| Power Supply | |
| Battery Type | Replaceable and Rechargeable Li-ion Battery |
| Battery Operating Time | ≥6 h (25°C, with hotspot off) |
| Type-C Power Supply | 5 V DC, 2 A Supports External Power Supply |
| General | |
| Protection Level | IP67 |
| Dimension | 138.2 mm × 68.4 mm × 212.4 mm (5.4" × 2.7" × 8.4") |
| Weight | 780 g without batteries |
| Working Temperature | -30°C to +55°C |
| Interpupillary Adjustment Range | 60 mm to 70 mm |
| Mounting Adapter | 1/4"-20-UNC |
| Laser Rangefinder | |
| Safety Class for Laser | Class 1 |
| Wavelength | 905 nm |
| Max. Measuring Range | 1000 m |
| Measurement Accuracy | ±1 m |
| Min. Measuring Range | 10 m |
| Infrared Illuminator | |
| Emitter | LED |
| IR Wavelength | 850 nm |
| Beam Angle | Adjustable 7.6 to 11.5° |

• Available Model

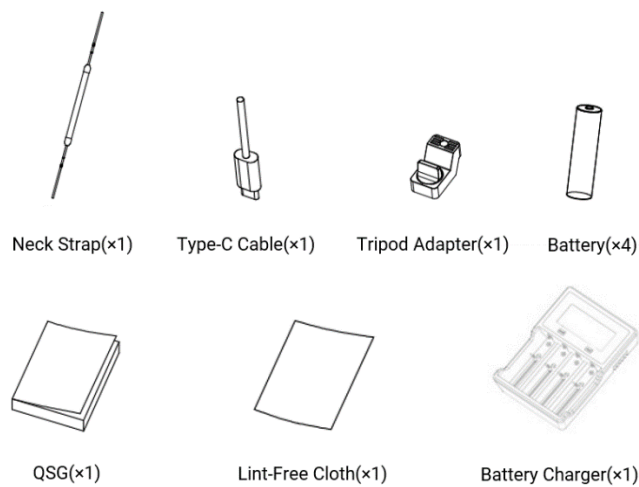
HM-TS73-35S2G/WLVE-HH35L


Dimension



Unit: mm [Inch]

Accessories





COMPLIANCE NOTICE: The thermal series products might be subject to export controls in various countries or regions, including without limitation, the United States, European Union, United Kingdom and/or other member countries of the Wassenaar Arrangement. Please consult your professional legal or compliance expert or local government authorities for any necessary export license requirements if you intend to transfer, export, re-export the thermal series products between different countries.



HIKMICRO SIGHT



 HIKMICRO Outdoor  hikmicro_outdoor  HIKMICRO Outdoor  HIKMICRO  info@hikmicrotech.com  <http://hikmicrotech.com/en>

Room 313, Unit B, Building 2, 399 Danfeng Road, Xixing Subdistrict, Binjiang District, Hangzhou, Zhejiang
@hangzhou microimage software co.,Ltd .2020 | data subject to change without notice!