



Model	 FL 35R	 FH 35R
Resolution, pixels	384×288	640×512
Pixel pitch, μm	12	
Sensor NETD, mK	40	35
Frame refresh rate, Hz	50	
Objective Lens	F35/1.0	
Field of view (H x V), degrees	7.5x5.7	12.6x10.1
Optical magnification, x	2-8	3.4-13.6
Digital zoom, x	1x,2x,3x,4x	
Display Type	OLED, 1024x768	
Battery type	Li-ion battery pack, replaceable	
Max. battery life (t=25 °C) ★, h	6	
Laser rangefinder range, m	800±1	
Built-in memory, GB	32	
Detection Range, m (Target size:1.7m×0.5m, P(n)=99%)	1818	
Dimension, mm	160x90x50	
Weight, g	400	
Operation temperature, °C	-20~+40	

★ Actual operation time depends on the intensity of Wi-Fi use and the built-in video recorder.



Finder Series

The newly upgraded Finder II Series comprises models FH35R and FL35R. As a high-end monocular with added rangefinder functionality, the Finder II Series captures all the fine details and realizes precise outdoor observation that the modern hunter and outdoor professional users would expect from an InfiRay product. It is a truly versatile unit and will quickly become a kit essential when you're out in the field.



InfiRay Technology Co., Ltd.

Tel: 400-998-3088 Fax: +86-535-3410604
 Mail: infirayoutdoor@infiRay.com Web: www.infiRayoutdoor.com
 Add: 11th Guiyang Street, YEDA, Yantai 264006, P.R.China

FL 35R / FH 35R



Image Quality Advantages

High Image Quality

The FH35R is equipped with 12 μ m 640 \times 512 pixel pitch high-resolution sensors featuring NETD \leq 35mk and uses a 1024 \times 768 resolution OLED display. Coupled with the optimized image algorithm, it creates stunning clear imaging.

12 μ m



Warm hue



Cold hue



InfiRay Finder series rainbow color palette

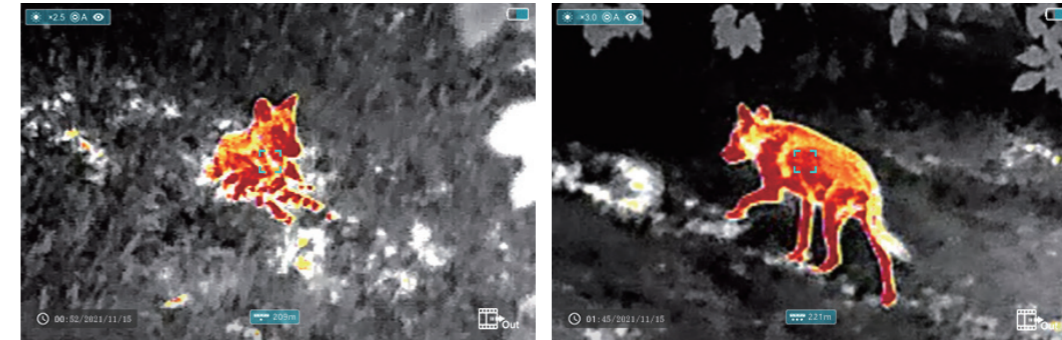
Dual-Hue Mode

Under cold hue, users can experience visually clearer imaging quality with rich details, highlight targets. Under warm hue, the users can get softer imaging to avoid visual fatigue brought by long time viewing.

Precision LRF for Hunting

Integrated Laser Rangefinder (LRF) up to 800 \pm 1m

The Finder II Series has a built-in laser ranging module, which provides both single ranging and continuous ranging, helping to capture target distance accurately.



6h \times 2
batteries

Long Life Time

Replaceable Battery Pack

The battery can be quickly removed and replaced with new ones in a matter of seconds. Carrying an additional battery pack as standard can extend battery life up to 12 hours.



Long Detection Range 1818 m

The 35mm objective lens in combination with advanced thermal imaging hardware provides exceptional detection. The FL35R & FH35R can boast detection ranges of up to 1818 meters in complete darkness.

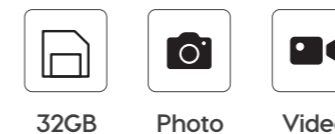
1818m



Upgrading Functions

Photo/video Recorder, Built-in 32GB Storage Capacity

The Finder II series is equipped with a 32GB recorder which enables video shooting and image capturing. Video and photo files saved in the internal memory can be transferred to a computer via wired connection or to a phone via WiFi.



WiFi Connection & App Supported

The Finder II Series and the InfiRay Outdoor app operate hand-in-hand, easily handling frame sync and data output. The app offers additional features such as access to the online InfiRay community and after sales support.