

 ARMYTEK

# PREDATOR PRO

The most long-throw tactical  
flashlight from Armytek now  
with magnetic charger

 **1500**  
MAX LUMENS

 **32**  
HOURS RUNTIME

 **501**  
METERS THROW

 WHITE OR  
WARM  
LIGHT

 **RECHARGEABLE**  
Magnetic USB charger  
and battery included

NO HASSLE  
WARRANTY  
**10**  
YEARS



# MAXIMUM THROW DISTANCE

High Intensity LED in combination with special reflector provides maximum throw distance in the tactical flashlights lineup



**1500**  
LUMENS

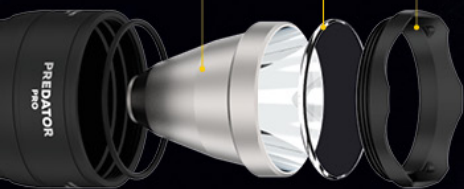


**501**  
METERS

PRECISELY  
CALCULATED  
REFLECTOR

TEMPERED  
GLASS

STEEL  
BEZEL



Steel bezel and tempered glass with anti-reflective coating for protection of the optical system

**501 m**



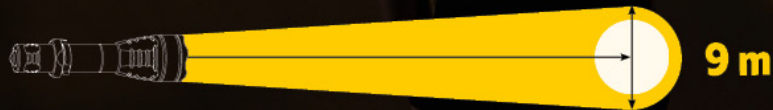
# NARROW BEAM OF LIGHT

Distinct hotspot and minimal spill for directed aim illumination

5°:40°  
HOTSPOT : SPILL

Hotspot diameter  
is 9 meters at 100  
meters distance

100 m



9 m

**ARMYTEK**

PREDATOR PRO

# DELIBERATE DESIGN

Solid body made  
from aircraft-grade  
aluminium 6061-T6

**41 mm**  
HEAD DIAMETER

**160 mm**  
LENGTH

**136 / 186 g**  
WEIGHT WITHOUT / WITH BATTERY



Steel striking bezel with matt non-reflective black titanium coating, which prevents location disclosure, is used for additional protection of the optical system in the event of a fall and as a shock-crushing tool

Special matt anti-abrasive finish without rough knurling, convenient holding even with wet hands

# DELIBERATE DESIGN

Withstands  
any recoil

Installation of the driver  
inside a reinforced capsule  
filled with protective  
compound

Two improved springs  
for even more efficient  
performance and battery  
and driver protection



# TWO-PHASE ELECTRONIC BUTTON

PRO

20 times more durable  
compared to mechanical switch

## TWO LEVELS OF PRESSING:

**Half-pressing** – momentary on  
when the button is pressed

**Full click** – constant light

Non-flat button allows easy switching on of  
the flashlight with a palm

Noiseless electronic button prevents location  
disclosure when hunting or during special  
operations



# TWO TYPES OF OPERATION

## PRO

### 1. HUNTING TYPE

5 modes by default, possibility to adjust optimal additional mode

### 2. TACTICAL TYPE

4 modes, fast switching between the modes, instant access to Strobe mode

### SWITCHING BETWEEN TYPES OF OPERATION

Unscrew and tighten up the head of the flashlight at least 10 times. The pause between the moves must be less than 1 second



#### Permanent on

Full click of the button

#### Momentary on

The flashlight is switched on by half-pressing of the button (no click) till the button is released

#### AUTOMEMORIZING

After switching off the last used mode is memorized for quick access at next switching on

# POWERFUL ELECTRONICS

PRO

Constant brightness even at low ambient temperatures and not fully charged battery

 **from -40 °C to +40 °C**





# INDICATION BY LIGHT



## Low battery level indication

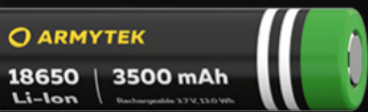
**LED FLASHES 2 TIMES AFTER  
30 SECONDS FROM SWITCHING ON**

Brightness of the mode is below  
25% from the rated value



# INNOVATIVE TECHNOLOGY

Use of any standard  
18650 Li-Ion battery



Full protection against short circuit even in case of contact between magnetic connector and metal objects

We recommend Armytek 18650 Li-Ion 3500 mAh batteries based on Korean and Japanese components



**ARMYTEK**

PREDATOR PRO

# FAST MAGNETIC CHARGER

Compatible with standard 18650 Li-Ion  
batteries of any manufacturer

Used with any wall or car USB adapter

Reliable and durable  
magnetic port



Charges 18650 Li-Ion  
3500 mAh battery in

**3 hours  
40 minutes**



# CHARGING PROCESS

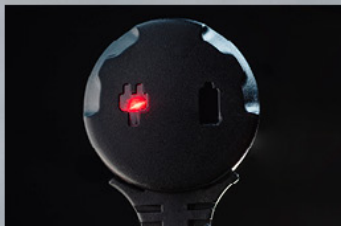


**RED BLINKING**  
Clean the external and internal contacts of the tailcap, as well as the contact areas of the charger

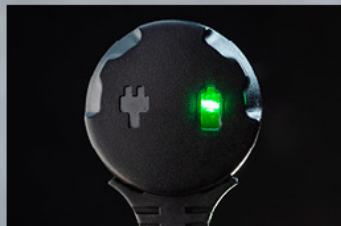
**ORANGE BLINKING**  
Bad contact or low USB power source voltage

For charging: tighten the head of the flashlight as far as it can go and adjust the magnetic charger

## Indication



**RED**  
Charging



**GREEN**  
Charging is finished



**ORANGE**  
USB power source voltage is too low, charging current is reduced

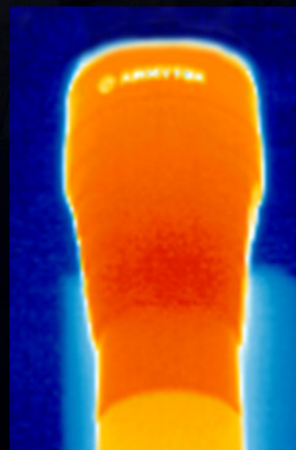
After charging: unplug the charger, tighten the tailcap

# TEMPERATURE CONTROL

Active real-time temperature control ensures safe and comfortable use

When the temperature becomes close to +58 °C, the brightness decreases, which allows avoiding flashlight and battery overheating, as well as LED degradation

Thought-out head design for better heat dissipation, spring on the driver to protect the battery from overheating



**COMPLIANT WITH EUROPEAN  
SAFETY STANDARDS**

**ARMYTEK**

**PREDATOR PRO**

# HIGH RELIABILITY

IP68 standard

Total protection from water and dust



Submersion  
at 25 meters up to 5 hours



Fallings from  
up to 25 meters



Water resistant  
magnetic connector



# ACCESSORIES IN THE SET

Injury-safe ergonomic silicone grip  
for convenient tactical hold

Steel clip with wear-resistant black  
titanium coating for mounting on  
clothes, equipment or belt



Nylon holster with several fixing options:  
on a belt of any width, on a Molle mount, on  
equipment thanks to durable steel ring



Size-adjustable wrist lanyard made of heavy-  
duty paracord with steel carabiner for quick  
removal and installation on the flashlight

# ADDITIONAL ACCESSORIES

Color filters to expand the functionality of the flashlight



Green light for hunting in woodland areas, not perceived by animals as a threat



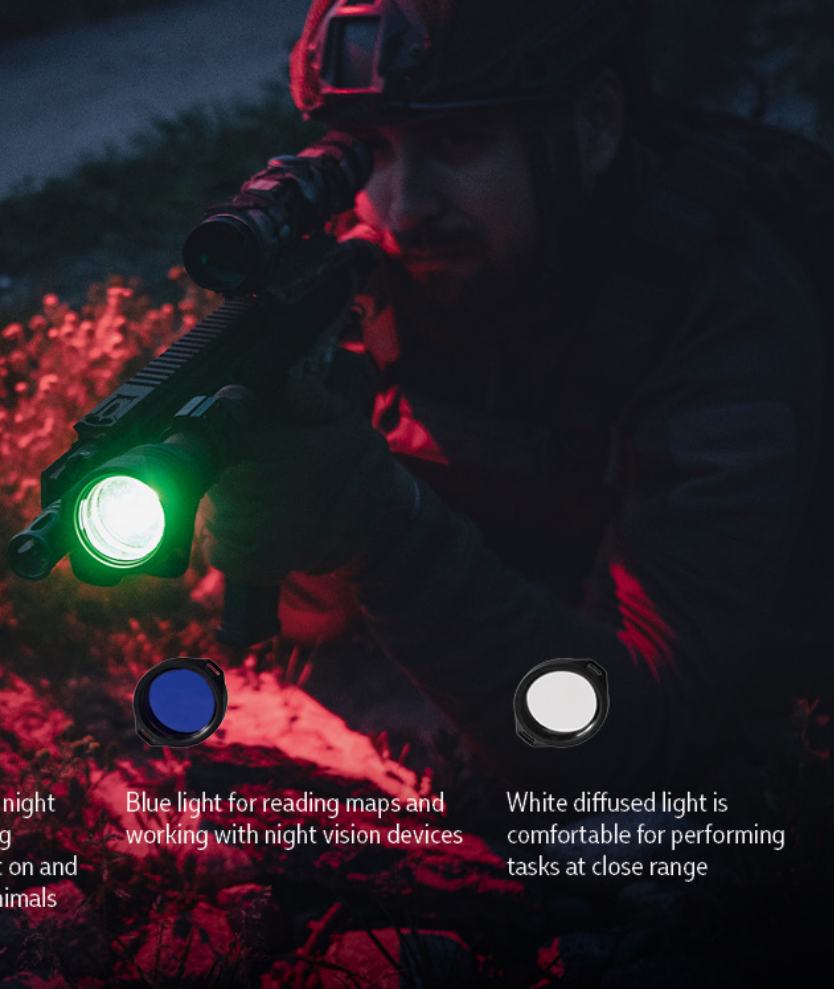
Red light for maintaining night vision when interchanging between turning the light on and off, almost invisible for animals



Blue light for reading maps and working with night vision devices



White diffused light is comfortable for performing tasks at close range





# UNPRECEDENTED WARRANTY



Armytek provides free warranty repairs for 10 years (excluding batteries, chargers, switches and connectors, which have 2-year warranty) from the date of purchase if there is a document confirming the purchase.



# VERSIONS WITH WHITE OR WARM LIGHT

## WHITE LIGHT

- More efficient blinding effect when using Strobe mode for self-defence
- Light output is 7% more
- Beam distance is 3% more

## WARM LIGHT

- More efficient in rain and fog
- Better conveys the natural color of objects
- Reduces eye fatigue during prolonged use

# WELL-THOUGHT-OUT SET OF ACCESSORIES



1. Flashlight
2. 18650 Li-Ion battery 3500 mAh
3. Magnetic USB charger

4. Silicone grip
5. Steel clip
6. Wrist lanyard



9



8



7. Nylon holster
8. 2 spare O-rings
9. User manual in eight languages